

DRAFT TOWER PORTFOLIO



MTB-4PSSKR



MTB-6BRKR



MTM-3PSSKR



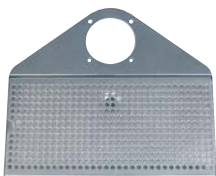
MTM-4BRKR



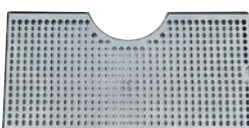
DP-630DSSPVD-Z



DP-640DP



DP-740DP



DP-734D

MUSHROOM

7-1/2" COLUMN AIR COOLED

SPINSTOP™ (air cooled) includes: Standard U.S. faucet with brass body & shank with 5 ft x 3/16" I.D. vinyl hose.

PART NO.	FAUCETS	FINISH	OUTLET	DISPENSE SYSTEM
MTB-4BR	4	PVD brass	Hose	SPINSTOP™ (Air Cooled)
MTB-4PSS	4	Polished SS	Hose	SPINSTOP™ (Air Cooled)
MTB-5BR	5	PVD brass	Hose	SPINSTOP™ (Air Cooled)
MTB-5PSS	5	Polished SS	Hose	SPINSTOP™ (Air Cooled)
MTB-6BR	6	PVD brass	Hose	SPINSTOP™ (Air Cooled)
MTB-6PSS	6	Polished SS	Hose	SPINSTOP™ (Air Cooled)

7-1/2" COLUMN KOOL-RITE™ (GLYCOL)

Kool-Rite™ (glycol cooled) includes: 304 stainless steel faucet & shank with 1/4" O.D. tube.

PART NO.	FAUCETS	FINISH	OUTLET	RESTRICTION	DISPENSE SYSTEM
MTB-4BRKR	4	PVD brass	Tube	7 1/2 lbs	Kool-Rite™ (Glycol)
MTB-4PSSKR	4	Polished SS	Tube	7 1/2 lbs	Kool-Rite™ (Glycol)
MTB-5BRKR	5	PVD brass	Tube	7 1/2 lbs	Kool-Rite™ (Glycol)
MTB-5PSSKR	5	Polished SS	Tube	7 1/2 lbs	Kool-Rite™ (Glycol)
MTB-6BRKR	6	PVD brass	Tube	7 1/2 lbs	Kool-Rite™ (Glycol)
MTB-6PSSKR	6	Polished SS	Tube	7 1/2 lbs	Kool-Rite™ (Glycol)



4" COLUMN AIR COOLED

SPINSTOP™ (air cooled) includes: Standard U.S. faucet with brass body & shank with 5 ft x 3/16" I.D. vinyl hose.

PART NO.	FAUCETS	FINISH	OUTLET	DISPENSE SYSTEM
MTM-3BR	3	PVD brass	Hose	SPINSTOP™ (Air Cooled)
MTM-3PSS	3	Polished SS	Hose	SPINSTOP™ (Air Cooled)
MTM-4BR	4	PVD brass	Hose	SPINSTOP™ (Air Cooled)
MTM-4PSS	4	Polished SS	Hose	SPINSTOP™ (Air Cooled)

4" COLUMN KOOL-RITE™ (GLYCOL)

Kool-Rite™ (glycol cooled) includes: 304 stainless steel faucet & shank with 1/4" O.D. tube.

PART NO.	FAUCETS	FINISH	OUTLET	RESTRICTION	DISPENSE SYSTEM
MTM-3BRKR	3	PVD brass	Tube	7 1/2 lbs	Kool-Rite™ (Glycol)
MTM-3PSSKR	3	Polished SS	Tube	7 1/2 lbs	Kool-Rite™ (Glycol)
MTM-4BRKR	4	PVD brass	Tube	7 1/2 lbs	Kool-Rite™ (Glycol)
MTM-4PSSKR	4	Polished SS	Tube	7 1/2 lbs	Kool-Rite™ (Glycol)



DRIP TRAY SELECTIONS

PART NO.	FAUCETS	SERIES TYPE	FINISH	DIMENSIONS
DP-630DSSPVD-Z	4 - 5	Surface mount	PVD with SS	19" x 9" with 8" dia. x 1-1/2"
DP-630D-Z	4 - 5	Surface mount	SS	19" x 9" with 8" dia. x 1-1/2"
DP-630DSSPVD-24-Z	5 - 6	Surface mount	PVD with SS	24" x 11" with 8" dia. x 3-1/2"
DP-630D-24-Z	5 - 6	Surface mount	SS	24" x 11" with 8" dia. x 3-1/2"
DP-640DSSPVD	4 - 6	Wrap around	PVD with SS	21-1/2" x 8-1/4" with 8" back plate
DP-640DP	4 - 6	Wrap around	Polished SS	21-1/2" x 8-1/4" with 8" back plate
DP-734DSSPVD	3 - 4	Surface mount	PVD with SS	18" x 9" with 6-1/4" dia. x 2" cutout
DP-734D	3 - 4	Surface mount	SS	18" x 9" with 6-1/4" dia. x 2" cutout
DP-740DSSPVD	3	Wrap around	PVD with SS	16-5/8" x 8-1/4" with 6" back plate
DP-740DP	3	Wrap around	Polished SS	16-5/8" x 8-1/4" with 6" back plate